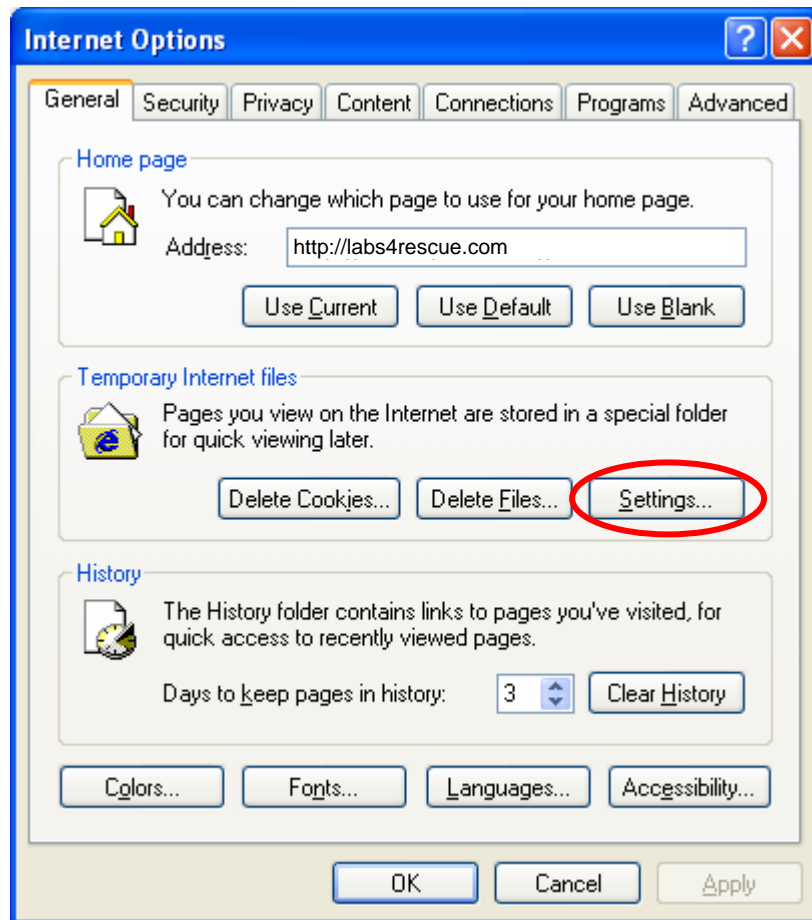


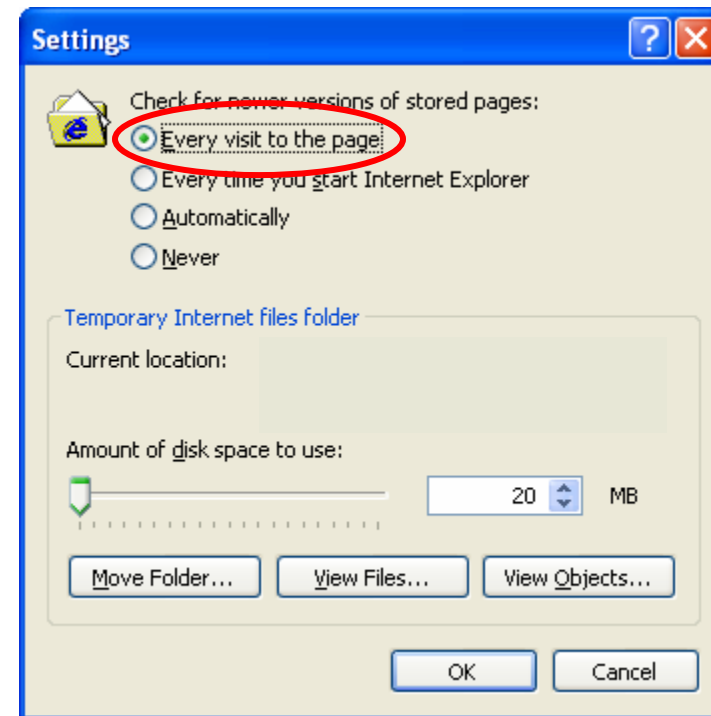
## Recommended Internet Explorer Settings

If you use Microsoft Internet Explorer, please follow the directions below to ensure that you are always looking at the most recent version of the Labs4rescue web sites and pet lists.

1. From the “Tools” menu, select “Internet Options”



2. In the Temporary Internet files panel select “Settings...”



3. Ensure that “Every visit to the page” is selected and hit “OK” twice to save the settings.